

Hardware Installation

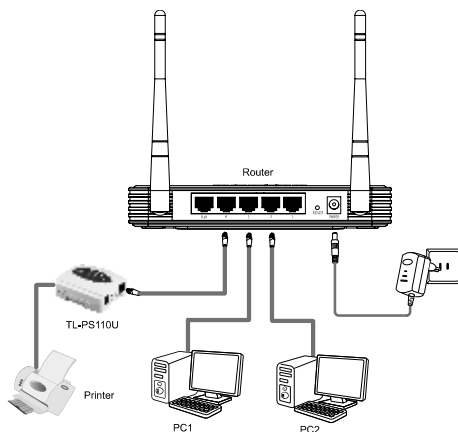
Note The product model shown in this QIG is TL-PS110U, as an example.

Before you start, you should prepare the following items

- Windows 2000/XP/2003/Vista/7 computer with print server setup CD
- One Printer
- One Printer cable
- One Router

Hardware Installation

1. Turn off the printer's power.
2. Connect the print server to your printer with the supplied printer cable. Connect the print server to your Router with the RJ45 cable. The image beside is the classic infrastructure topology for reference:



3. Turn the printer's power on.
4. Plug the AC power adapter into the power connector on the print server.
5. Wait 40 seconds as part of the print server's Power On Self Test (POST).

Factory Default Settings

- Username: admin
- IP Address: 192.168.0.10
- Subnet Mask: 255.255.255.0

Note The TL-PS110U is produced without password by default.

Software Installation

1

Configuring the Printer Server

1 Select the Print Server

Insert the provided CD into your computer's CD drive, the Setup Wizard will automatically pop up on your computer's screen.

Select **TL-PS110U**



Note If you don't have a CD-ROM, you can click to our web site (<https://www.tp-link.com/en/download/TL-PS110U.html#Utility>) and download the PrintServer_Setup_Wizard.

Click **Setup Wizard**





Click **Next**

On the **Select A Print Server** screen, TL-PS110U will be detected as "1P_PrintServXXX".



Select the print server

Click **Next**

2 Configure the Print Server

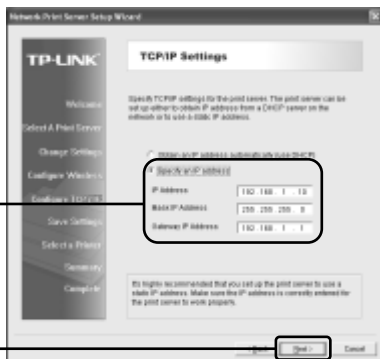


Please select **Yes**. Leave the Password **blank**

Click **Next**

Assign a static IP to your Print Server. The IP should be within the same subnet of your Router

Click **Next**



Note The IP address of the print server must be within **the same subnet** with your Router, for example:

Network device	IP address
Router/Gateway	192.168.1.1
Print server	192.168.1.10

Note Remember the IP address of the Print Server, because you may log into the Print Server by this IP next time.

Confirm the settings

Click **Next**





PSWizard is saving the configurations to the print server

Click **Next**

2

Configuring the Printer

This page will then display.

If your printer has already appeared in the Printer Name list, please follow the **instruction 1**. Otherwise please follow the **instruction 2**.



1

Select an existing printer by the printer name

Click **Next**, and then follow the step by step instructions to complete the installation



You have now installed the print server and the printer successfully. You can print through the network.

Note The print server needs to be configured only once, other users who want to share the printer only need to install the printer's driver and configure the TCP/IP port on their computers. Please refer to the User Guide on the resource CD.

Click Add New Printer



Click Next



Select Local printer attached to this computer



Click Next

Tick **Use the following port** and select **LPT1: (Recommended Printer Port)** from the pull-down list

Click **Next**



Select the manufacturer and model of your printer

Click **Next**



Note If you already have the printer's driver installed, you will be asked whether to keep or replace it. Please select replace it.

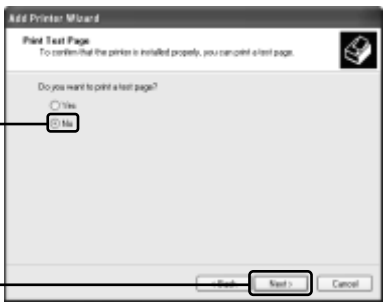
Enter a name for your printer

Click **Next**



Select **No**

Click **Next**



Click **Next**, and then follow the step by step instructions to complete the installation



You have now installed the print server and the printer successfully. You can print through the network.

Note The print server needs to be configured only once, other users who want to share the printer only need to install the driver of the printer and configure the TCP/IP port on their computers. Please refer to the User Guide on the resource CD.

Technical Support

- For more troubleshooting help, go to:
<http://www.tp-link.com/en/support/faq>
- To download the latest Firmware, Driver, Utility and User Guide, go to:
<http://www.tp-link.com/en/support/download>
- For all other technical support, please contact us by using the following details:

Global

Tel: +86 755 2650 4400
Fee: Depending on rate of different carriers, IDD.
E-mail: support@tp-link.com
Service time: 24hrs, 7 days a week

USA/Canada

Toll Free: +1 866 225 8139
E-mail: support.usa@tp-link.com(USA)
support.ca@tp-link.com(Canada)
Service time: 24hrs, 7 days a week

Turkey

Tel: 0850 7244 488 (Turkish Service)
Fee: Depending on rate of different carriers.
E-mail: support.tr@tp-link.com
Service time: 09:00 to 21:00, 7 days a week

Ukraine

Tel: 0800 505 508
Fee: Free for Landline; Mobile: Depending on rate of different carriers
E-mail: support.ua@tp-link.com
Service time: Monday to Friday, 10:00 to 22:00

Brazil

Toll Free: 0800 608 9799 (Portuguese Service)
E-mail: suporte.br@tp-link.com
Service time: Monday to Friday, 09:00 to 20:00;
Saturday, 09:00 to 15:00

Indonesia

Tel: (+62) 021 6386 1936
Fee: Depending on rate of different carriers.
E-mail: support.id@tp-link.com
Service time: Sunday to Friday, 09:00 to 12:00,
13:00 to 18:00 *Except public holidays

Australia/New Zealand

Tel: NZ 0800 87 5465 (Toll Free)
AU 1300 87 5465 (Depending on 1300 policy.)
E-mail: support.au@tp-link.com (Australia)
support.nz@tp-link.com (New Zealand)
Service time: 24hrs, 7 days a week

Germany/Austria

Tel: +49 1805 875 465 (German Service)
+49 1805 TPLINK
+43 820 820 360
Fee: Landline from Germany: 0.14EUR/min.
Landline from Austria: 0.20EUR/min.
E-mail: support.de@tp-link.com
Service time: Monday to Friday, 09:00 to 12:30
and 13:30 to 18:00. GMT+1 or GMT+2 (DST in
Germany) *Except bank holidays in Hesse

Singapore

Tel: +65 6284 0493
Fee: Depending on rate of different carriers.
E-mail: support.sg@tp-link.com
Service time: 24hrs, 7 days a week

UK

Tel: +44 (0) 845 147 0017
Fee: Landline: 1p-10.5p/min, depending on the time of day. Mobile: 15p-40p/min, depending on your mobile network.
E-mail: support.uk@tp-link.com
Service time: 24hrs, 7 days a week

Italy

Tel: +39 023 051 9020
Fee: Depending on rate of different carriers.
E-mail: support.it@tp-link.com
Service time: Monday to Friday, 09:00 to 13:00; 14:00 to 18:00

Malaysia

Toll Free: 1300 88 875 465
Email: support.my@tp-link.com
Service time: 24hrs, 7 days a week

Poland

Tel: +48 (0) 801 080 618
+48 223 606 363 (if calls from mobile phone)
Fee: Depending on rate of different carriers.
E-mail: support.pl@tp-link.com
Service time: Monday to Friday, 09:00 to 17:00. GMT+1 or GMT+2 (DST)

France

Tel: 0820 800 860 (French service)
Fee: 0.118 EUR/min from France
Email: support.fr@tp-link.com
Service time: Monday to Friday, 09:00 to 18:00 *Except French Bank holidays

Switzerland

Tel: +41 (0) 848 800 998 (German Service)
Fee: 4-8 Rp/min, depending on rate of different time.
E-mail: support.ch@tp-link.com
Service time: Monday to Friday, 09:00 to 12:30
and 13:30 to 18:00. GMT+1 or GMT+2 (DST)

Russian Federation

Tel: 8 (499) 754 5560 (Moscow NO.)
8 (800) 250 5560 (Toll-free within RF)
E-mail: support.ru@tp-link.com
Service time: From 09:00 to 21:00 (Moscow time) *Except weekends and holidays in RF

